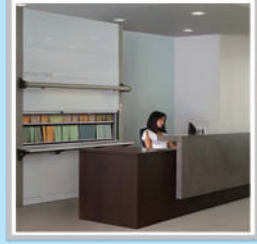


OFFICE SUPPLIES CO. L.L.C.



*The Complete Guide To All Your
Office Product & Turnkey Project Need.*



ISO 9001

BUREAU VERITAS
Certification



PHOTOCOPIER | PRINTER | FAX | PLOTTER | SCANNER | B/W & COLOUR |
OFFICE EQUIPMENT | OFFICE FURNITURE | STATIONERY | COPY BUREAU

SOFTWARE DIVISION : **ManageEngine** **sage**

Committed to customer service for 43 years

شركة توريدات المكاتب ش.م.م.

OFFICE SUPPLIES CO. L.L.C.



A Part Of Omar Zawawi Establishment

P.O. Box 1437, Ruwi, Postal Code 112, Sultanate of Oman, Building No. A/28/1, Way No. 1135, MBD South.
Tel. No. 24829400 (10 Lines), Fax No.: 24829482

Email: oss@omzest.com, Website: <http://www.officesuppliesllc.com>

Our Esteemed Clients



State Audit Institution



جامعة السلطان قابوس
Sultan Qaboos University



SULTANATE OF OMAN
OMANI AUTHORITY FOR
PARTNERSHIP FOR DEVELOPMENT



شركة النفط العماني ش.م.ع.م.
Oman Oil Company SAOC



Royal Court Affairs



مُؤَدون البلاط السلطاني



Ministry of Endowments
& Religious Affairs

SIEMENS



Mideast Data Systems LLC.



Sultanate of Oman
Ministry of Finance



كلية ولجات للعلوم التطبيقية
WALJAT COLLEGE OF APPLIED SCIENCES



OAMC
الشركة العماني لإدارة المطارات ش.م.ع.م.
OMAN AIRPORTS MANAGEMENT COMPANY S.A.O.C.



Our Prestigious Furniture Projects



Sl.No	Customer	Details of the Project
1	Bank Muscat	Around 2500 STEELCASE workstation, meeting rooms tables of various sizes, desks for dealing room & training room furniture
2	British Petroleum (BP)	Height adjustment workstation with specialized screens to hold large size monitor, chairs, storage & breakout furniture - all from STEELCASE
3	Shell Development	Complete furnishing of multi purpose hall having training center, breakout furniture & offices - all from STEELCASE
4	New Supreme Court Judges Assembly Building	Comprehensive project comprise of STEELCASE workstation, partition, chairs, storage, lounge furniture, customized court room & visitors seating chairs, high-end customized Judges' chairs
5	New Salalah International Airport	Chairs of various types for staff managers senior officials, canteen & training rooms - all from STEELCASE
6	New HQ Building of RCA at Al Goubrah	Complete furnishing comprise of staff workstation & chairs, managers rooms desk chairs, partition, screen, storage curtains, carpets and auditorium chairs installation - from STEELCASE & HYUNDAI Livart
7	Palace staff clinic at Salalah & Muscat	Total furnishing - desking, screen, partition, chairs, storage, curtains for offices of doctors & admin staff - Mostly STEELCASE
8	HSBC HQ	Desking Benches, chairs & managers rooms desk & chairs, storage & breakout area furniture - Desking from FREZZA, Chair - STEELCASE
9	State Audit Institution	High end workstation with partition & built-in storage for various hierarchies, managers and mobile staff - all STEELCASE
10	US Embassy	Desking, seating for staff, managers & breakout area furniture & capets. Desks from FREZZA & Chairs - STEELCASE
11	New HQ of Administrative Court	Total refurbishing with specialized workstations, Partition, built in storage for staff, managers & court room furnitures - STEELCASE & customized
12	Royal Oman Police	Several offices of ROP at various locations complete refurbishing - HYUNDAI Livart
13	OXY & ITA	STEELCASE Media:scape compressing of furniture & IT outfit for instant conferencing and meeting room presentations
14	Carrefour & BP	STEELCASE Room wizard systems for conference room booking with complete information of the time, date & period of booking
15	Oil Tanking Sohar	Total furnishing with high-end desking & seating for various levels of staff meeting room, lounge and breakout furniture - all from STEELCASE
16	Waljat College	Class room, library furniture, desking, seating, canteen, laboratory and auditorium furniture from HYUNDAI Livart

Our Prestigious Equipment Projects



Sl.No	Customer	Details of the Project
1	OAMC Salalah Airport	Various Kind of lockers, racking, mobile shelving systems
2	State Audit Institution	Very very large mechanical mobile shelving systems
3	CBO - Muscat, Sohar & Salalah	Extremely Secure & High-tech Bulk Cash Receive & Disposal Counter
4	Internal Security Services	Many installations of Mobile Shelving in various locations
5	Sultan Qaboos University Hospital	Industrial large racking systems of two floors for medical store
6	PDO	Highly secure heavy duty document shredding & disposal system
7	Sultan Qaboos University	Several Mobile Shelving Systems
8	Royal Oman Police	Large number of closed lockable and rotating document filing system at many locations of ROP in the interior
9	Muscat Municipality	Several mobile shelving storage systems
10	The Royal Office	Various sizes of mobile shelving at different locations
11	Bank Dhofar	Pitney Bowes auto mailing systems for mailing customer statements
12	Oman Oil Company	Mobile Shelving in Several rooms
13	Bank Muscat HQ Bldg.	Mail room management with Pitney Bowes auto mailing systems
14	National Records and Archives Authority	Highly secure & very heavy duty document destruction system
15	State General Reserve Fund & CBO	Electronic Mobile Shelving System
16	General Secretariat to the Cabinet	Highly secure Heavy Duty document shredding (becomes powder) system.
17	Oman Establishment for Press Publication and Advertising (OEPPA)	Different configuration of mobile shelving system
18	NBO & Bank Muscat	Highly secure Heavy Duty document shredding (becomes powder) system.
19	Oman shipping Company	Racking & mobile shelving systems
20	Ministry of Housing & Armed Forces Hospital	Electronic Vertical Carousel for document storage & retrieval
21	Ministry of Education	Very large Electronic Mobile Shelving systems
22	Royal Oman Police	Several, racking systems in different locations
23	Qatar National Bank	Installation of Safe Deposit Lockers
24	PASI & NBO	Pitney Bowes Auto Mailing system for mailing clients statements
25	Royal Oman Police	Many high productivity secure Shredder installations for paper & plastic materials.
26	CBO & QNB	Secure & high-tech Vault Doors for bulk cash storage at several locations

ISO Quality Certification



BUREAU VERITAS
Certification



Certification

Awarded to

OFFICE SUPPLIES CO. L.L.C.

Building No.A/28/1, Way No.1135, MDB South, Ruwi

P.O. Box:1437, Postal Code 112, Ruwi

SULTANATE OF OMAN

Bureau Veritas Certification Holding SAS – UK Branch certify that the Management System of the above organisation has been audited and found to be in accordance with the requirements of the management system standards detailed below

Standard

ISO 9001:2008

Scope of Certification

TRADING AND SERVICE OF EQUIPMENTS, STORAGE SYSTEMS, OFFICE FURNITURE AND STATIONERY

Certification cycle start date: **13.May.2016**

Subject to the continued satisfactory operation of the organisation's Management System, this certificate expires on: **14.Sep.2018**

Original certification date: **13.May.2016**

Certificate No. **IND16.5344 U/Q**

Version 1, Issue date: **13.May.2016**

Signed on behalf of BVCH SAS UK Branch



008

Certification body address: 66, Prescott Street, London, E1 8HG, United Kingdom

Local office: Office 6A, 8th Floor, Coral Building, Al-Khuwair, P.O.Box, 110, P.C.134, Muscat, Sultanate of Oman

Further clarifications regarding the scope of this certificate and the applicability of the management system requirements may be obtained by consulting the organisation.
To check this certificate validity, please call: **(+968 2447 59 25)**



RICOH

Gestetner

Digital Multi-Function Printers Solution

Single to Multi-function Printers | A4 to A0 | B/W to Colour
for personal users, large organization and production users

Multifunction A3 & A4 MFPs

- . Wide speed range 20 to 90 ppm
- . Mono & Color
- . Superior Image Quality
- . Easy Operation
- . Compact & quiet
- . Enhanced Security



RICOH Consumables



Heavy Duty Color & B&W Printers

Fast affordable printing
Reduce maintenance cost

Standalone Fax Machines

High speed Super G3 faxing
Transmission / Reception Mem.

DIGITAL DUPLICATORS FOR EDUCATIONAL ENVIRONMENT



- Wide Range of Speed Max Up to 240 PPM
- High Productivity & Reliability
- Excellent Image Reproduction
- Environment Friendly
- Lower Operation Cost
- Energy Saving Innovative Technology

RICOH PORTABLE PICO PROJECTOR



Model : PJWXC1110, Weight Just 0.45 kg,
LED technology 30,000 LAMP HOURS 600 Lumens
High-Contrast Mode: 40,000:1, WXGA-1280X800

RICOH PROJECTORS FOR MULTIPURPOSE USE



- Showcase your best ideas wherever you go
- Impress your audience with brighter, sharper images
- Input terminals are located on the side for convenience
- Reduce maintenance costs
- Runs quietly with noise level below 34 dB

UNIQUE A4 MFP WITH A3 SIZE PRINT CAPABILITY

- RICOH MP 305+SPF A4 MFP With
- A3 Copy/Print from Bypass Digital Laser MFPs
- (Copy/Print/Scan/Fax).
- With 10.1" COLOUR Smart Panel & ARDF
- Engine Speed :30 ppm A4 B/W
- Printer Language : GDI/PCL6, Ps3
- Memory Capacity: 2GB RAM + 320 GB HDD
- Direct Print from & Scan to USB/SD card
- Mobile Printing capability: Apple & Android Air Print



WIDE FORMAT (A0 SIZE) **COLOR** COPIER/PRINTER/- SCANNER/PLOTTER



Nashuatec (RICOH) Wide Format Digital **Color** Multifunctional System

- A1 Speed : 3.8 Black/2.1 Full Color PPM
- A0 Speed : 1.9 Black/1.1 Full Color PPM
- Print Resolution : Up to 1200X1200 dpi
- Controller Board : Embedded
- CPU : Celeron - M 1.0 Ghz
- User Friendly 10.1” Smart Operation Panel
- 4GM RAM + 320 GB HDD
- 1 Roll Feeder + Cut Sheet Bypass

WIDE FORMAT (A0 SIZE) B/W COPIER/PRINTER/- SCANNER/PLOTTER

RICOH B/W Digital Wide Format Copier With 2 Roll Feeder

- A0 size copy/print
- One Box solution for wide format Print & copy
- 6.7 Copies/Prints (A1) per minute
- 3.3 Copies/Prints (A0) per minute
- 600 dpi Print Resolution
- 25%-400% zoom (A0 to A4 & A4 to A0)
- 2.5 GB memory RAM + 320 GB Hard Disk
- Scan to E-mail : SMTP Mail server required
- Scan to Folder : Via SMB, FTP or NCP
- Scan to External Media : SD Card & USB





Equitrac Office® & Ysoft SafeQ with Print & Copy Control™

Cost Reduction and Printing Management

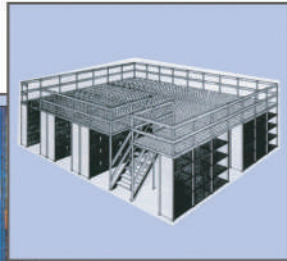
With these softwares, you can track, analyze, allocate and, if necessary, recover the costs of every document that is sent to a networked printer, copier or multifunction device.

- ✓ Track and allocate all costs
- ✓ Reduce print volumes
- ✓ Increase administration efficiency
- ✓ Increase productivity
- ✓ Protect sensitive information
- ✓ Control access and improve security
- ✓ Accurately monitor and account every Print, Copy and Scan.

Modular suite of intelligent and cutting-edge enterprise print, copy and scan management technology. Ysoft SafeQ helps Fortune 1,000 and SMBs build smart business by reducing costs, enhancing document security, increasing workflow productivity and positively contributing to sustainability and environmental goals.

- ✓ Ysoft SafeQ PMS support MS Cluster
- ✓ PMS software contains the feature of automatic load balancing
- ✓ PMS supports MS Cluster
- ✓ PMS support Follow me Printing
- ✓ PMS allows Direct Printing
- ✓ PMS supports Driverless and Email Printing.

**Heavy Duty Industrial
Racking / Storage**



Storage solutions slotted angle shelves, pallet racks & bolt-free shelves. Mezzanine erections for office / industrial applications, complete design and installation services.



The cost-effective **mobile storage solution** for office & warehousing applications. Also horizontal **mobile shelving** or vertical electrical retrieval storage for documents, parts etc. Complete system solutions from design to commissioning.

**Binding & Laminating
Machines**



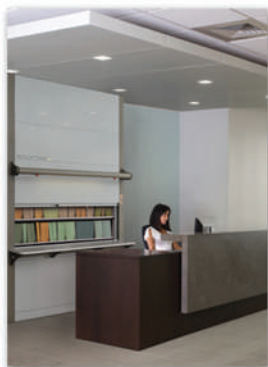
A wide variety of **binding equipments** and **laminators** from ID cards to A0 sizes.



White boards, Pin boards, Display boards, fixed wall/mobile types. Sizes can be customised and you can pick your colour for the pin boards. The Polyvision white boards have a ceramic surface which are scratch resistant with 25 years writing surface warranty.



**ICAM Vertical
Carousels**



Automated electronic filing system for convenient and secure storage and retrieval of files, documents & other items.

PolyVision - eno series interactive solution.



PolyVision's **eno series** is the first and only environmentally certified **interactive whiteboard** to combine the simplicity and ease of a traditional marker board with high-performance interactivity—without cords, cables or costly installation.

INTEGRATED AUTOMATIC MAILING SYSTEMS DISPLAY PANELS, ELECTRONIC PRESENTATION EQUIPMENT & ACCESSORIES



PitneyBowes



Auto mailing system



Semi & fully automatic system for inserting, folding and enveloping.

PitneyBowes

Convenient 24x7, 365 days to secure packages. Retrieval in 3 easy steps for packages.



Smart Locker



DLP Projector

Optoma

OPTOMA DLP digital electronic projectors for multimedia presentations for small offices to big halls. Also customised design & installation services for complete Audio/Visual systems.



PitneyBowes fully automatic integrated mailing system manages printed web documents to ready-to-mail envelopes. This includes cutting, trimming, sorting, folding, inserting additional ad material into envelopes, sealing and stamping for posting. Custom designed solutions available for all applications.

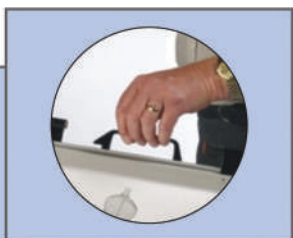


NOBO & Optoma

Quality projection screens wall / ceiling type, tripod stand, floor standing & front/rear projection systems for different sizes to suit specific needs. Range of OHP trolleys to choose from.



A0 size Drawing hanger



Drawing Hanger Systems
The unique Vistaplan hanger is specifically designed to provide a simple and effective system of filing large numbers of drawings, maps, posters and other large sheets.



NOBO multimedia trolleys for LCD projectors, Laptops & Slide projectors. A/V trolleys available for upto 29" TV. NOBO Mobile Flipchart stand is also available.

We handle all your mailing needs and audio visual presentation

HSM & SECURIO®



Shredders

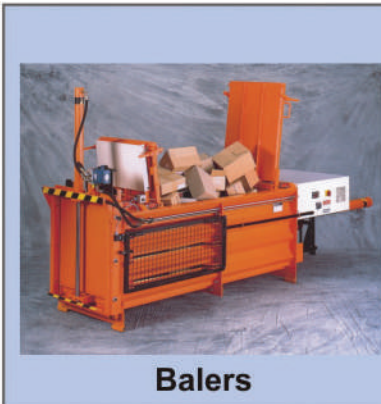


Top Security shredders for office and heavy duty application. Variety of security levels to destroy your confidential documents, Cds, plastic cards and diskettes.

biefee Engineering Drawing Products



Professional drawing board for the draft man, contracting office, the design studio, large format drawing storage, filing cabinets, plan hangers and accessories in BIEFEE brand.



Balers



HSM Baling presses with combination shredder. Barrel Press, vertical and horizontal baling press from 6 to 20 ton capacity. System solution provider to meet all waste disposal needs.

Rexel



The advanced shredders provide sufficient security to shred confidential documents into small Cross-cut and Strip cut pieces. It features jam-free technology with continuous sensing.

SEM



Disintegrators from secure to destroy paper, magnetic media, optical media & hard disk.

Fichet - Bauche

Fichet - Bauche safe deposit lockers



Currency counting machine



Time Printer



Fichet - Bauche & Falcon

Physical security Products Viz fire safes, burglar safes, data safes, strongroom doors, vault doors, fire resistance filing cabinets with international certificates for quality assurance. Small lockers, hotel safes and cash boxes for protection against fire and burglary.

Banking and office equipment, viz note-counting machines, currency verifiers, time punching machines & safe deposit lockers in banks for secure storage.

BISLEY PRODUCTS



Lockers: Wide range of lockers for personal storage, books, document and media storage are available to meet the requirement in different situations. Elegant finish, workmanship and choice of colours are ensured for total satisfaction.

SYSTEM FILE LEDGER, MOBILE TOOL CABINET, STATIONERY TOOL CABINET



Bisley System file ledges are the newest addition to the extensive SystemFile™ range. Designed as a high-density storage option for personal use - the 1000mm wide carcass can accommodate three rows of lockers - each compartment can be locked independently.



Mobile Tool Cabinets within the Bisley ToolStor range come in a variety of sizes, colours and drawer configurations. A wide aluminium push handle helps position the cabinet wherever it is needed. All mobile ToolStor cabinets have 4 x 170kg capacity industrial castors and a 4 sided steel tray top with a high grade rubber lining.



Stationary Tool Cabinets from the Bisley ToolStor range come in a variety of sizes, colours and drawer configurations. This make them the best tool cabinet for creating your tailored workspace

ELECTRONIC MOBILE SHELVING



The latest development in the mobile shelving concept is the **Electronics Mobile Shelving**. The system is controlled by a digital touch screen. Two versions EUN TRONIC & OFFICE TRONIC are suitable for very large and mid size installations respectively. It's from a renowned and well established European brand called Eun Mobile. The front panels of mobile shelving unit can be decorated to improve the aesthetic aspects.

BISLEY PRODUCTS



Bisley Syetem File Combination unit: Can provide a multitude of solutions, with a vast choice of internals and accessories for further customisation, all the while maintaining consistency of design and quality, crucial to the modern office.



Media Storage Cabinets: Cabinets are specifically designed to store CDs, DVDs and videos. Each drawer can be divided into two rows to accommodate up to 54 DVDs or 26 videos and three rows to accommodate 120 CDs.



F Series Cabinets flush front and classic front: Offer the flexibility required for today's work environment, with space for both A4 and foolscap suspension files. Possible configurations include two filing drawers, six personal drawers and one filing drawer, and three personal drawers.

Q MANAGER



Q Manager is designed for access control in administrative facilities, banks, stadiums, airports and other sites with separation of areas. Customization can be done on separating tapes.

SPEED BUMP



Speed bump with rising kerb is designed to create a temporary speed limit zone. The design of this model can be used as a regular sleeping policeman to reduce speed in stand-by mode and as a blocking device for complete blocking of the driveway span in open position.

ROAD BLOCKER



A solid metal barrier rises up from the road surface making it impossible for any vehicle to gain entry to multiple access entry point locations or sensitive zones.

TYRE KILLER



Tyre Killer is the perfect solution to limit or prevent the entry to the protected area. Using “Tyre-killer” one can be sure that any vehicle would not overcome this obstacle – with sharp and high “knives” even the strongest tire will be cut, which will greatly hinder further actions of attacker.

CONTROL PLATES



Control plates are the most economic solution for single-direction access implementation. Vehicle will easily overcome them in permitted direction, but at the same time face a tangible obstacle when trying to move in a prohibited direction.

BOLLARDS



It is an alternative for rising arm barriers whilst many **bollards** provide aesthetic benefits, typically metal bollards are used to protect pedestrians and buildings from vehicles; metal bollards provide one of the simplest means of controlling access and providing perimeter defense. Anti Ram bollard are also offered.

**New generation document solution, highly reliable
and state of the art stand-alone & network
multifunction equipments in COLOUR & B/W**



Multifunction Photo Copier with Finisher.

**Multifunction Equipment -
B/W (Photocopier / Fax / Printer / Scanner)**
- Wide range with various finishing
options from 16 copies/prints per
minute (c.p.m.) to 80 c.p.m.

High Speed Laser Printer



Laser Printer

From 30 p.p.m to 60 p.p.m in B/W and
colour upto A3 size.

Multi Function Colour Copier



**Colour Multifunction Equipment
(Copy/fax/print/scan) -**
High Quality colour printing
from 30 c.p.m. 40 c.p.m.

Large Format Copier/Plotter/Scanner



All in one Machine

for copying, printing,
scanning & faxing



Engineering Drawing (upto A0 size) copier/plotter/scanner

It is fully featured large format multi functional equipment
for drawing/plan reproduction.



ManageEngine: IT Management, Simplified

ManageEngine simplifies IT management with affordable software that offers the ease of use SMBs need and the powerful features the largest enterprises demand. ManageEngine IT management applications are easy to download, install, configure, and deploy - no third-party support services or help needed. That's why ManageEngine solutions have become the preferred, do-it-yourself alternatives to complex, expensive products.

It's a simple, transparent approach to the business of IT management software. Pricing has no hidden costs. Customers can download ManageEngine products for a free trial, so they can make informed purchase decisions. Its community, forums, and blogs are unedited, so everybody can hear from our customers what they have to say about our products and services.



Service Desk Plus

Service Desk Plus is ITIL-ready help desk software with integrated Asset and Project Management capabilities. With advanced ITSM functionality and easy-to-use capability, ServiceDesk Plus helps IT support teams deliver world-class service to end users with reduced costs and complexity. It comes in three editions. Over 100,000 organizations, across 185 countries, trust ServiceDesk Plus to optimize IT service desk performance and achieve high end user satisfaction.

ITIL ServiceDesk with Incident, Problem and Change Management

Integrated IT Asset Lifecycle Management

Software Auditing and License Tracking

Purchase, Contract and Vendor Management



OpManager Integrated network management software for today's networks!

Managing network performance is always a great challenge. This doubles when multiple point-products are used to manage it. Introducing OpManager v12, world's first truly integrated network management software for faster and smarter network management. It out-of-the-box offers network monitoring, physical and virtual server monitoring, flow-based bandwidth analysis, firewall log analysis and archiving, configuration and change management, and IP address and switch port management, thereby providing all the visibility and control that you need over your network.



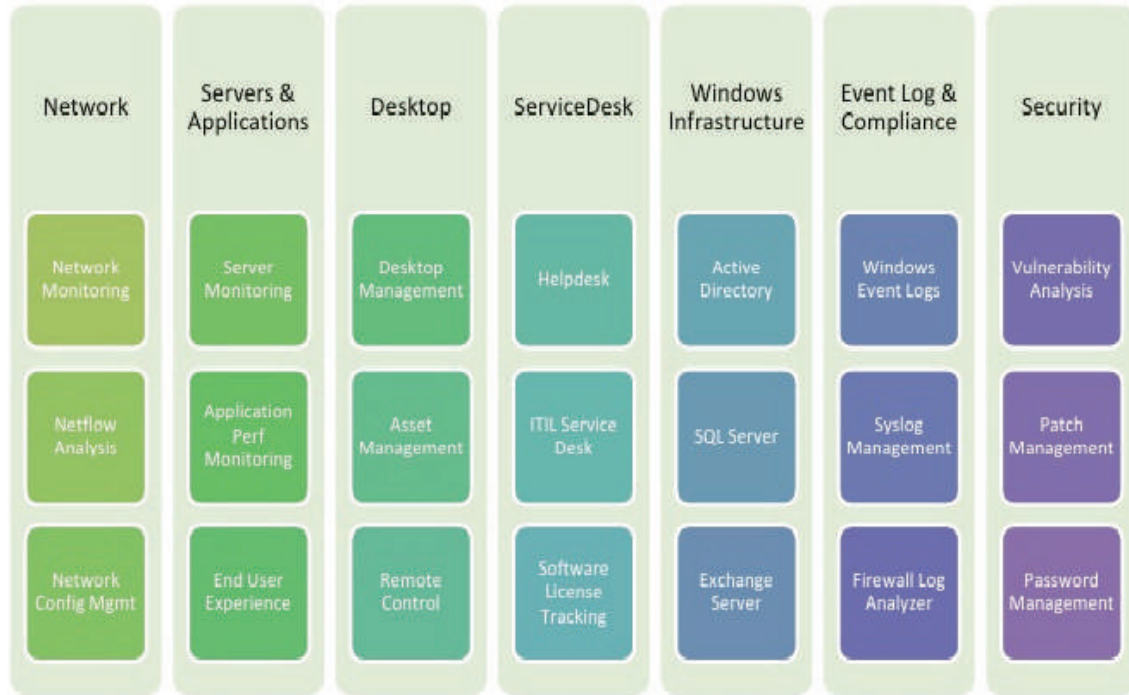
AD360

AD360 is an integrated solution for Identity and Access Management (IAM) needs in Windows environment. This web-based software portfolio unifies all the functionalities needed for an enterprise: from user provisioning, self-service to risk governance and offers it with a simple, easy to use interface. It is the right solution for bridging the gap between technology and the complex business needs.

It automates all the routine Identity and Access Management tasks like provisioning/de-provisioning bulk user accounts and other AD objects, secure management of account passwords, modifying multiple attributes of user accounts, managing user mailboxes and their email traffic.

ManageEngine Partner in Oman

ManageEngine Portfolio



Used by 50,000 customers: 3 out of every 5 Fortune 500 companies

OS is the First Manage Engine Partner in Oman having more than 100 implementations!!!



Manage Engine Service Desk Plus

ServiceDesk Plus is **ITIL-ready help desk software** with integrated Asset and Project Management capabilities. With advanced ITSM functionality and easy-to-use capability, ServiceDesk Plus helps IT support teams deliver world-class service to end users with reduced costs and complexity. It comes in three editions and is available in 29 different languages. Over 100,000 organizations, across 185 countries, trust ServiceDesk Plus to optimize IT service desk performance and achieve high end user satisfaction.

✓ IT Project Management	✓ Self Service Portal
✓ Data Archiving	✓ Change Management
✓ Automatic Ticket Dispatch	✓ Problem Management
✓ Business Rules	✓ Asset Discovery
✓ HelpDesk Notifications & Reports	✓ Agent Scanning
✓ Purchase Order management	✓ Contract Management
✓ Software Asset Management	✓ Multisite support

ManageEngine
OpManager

Manage Engine OpManager

Managing network performance is always a great challenge. This doubles when multiple point-products are used to manage it. Introducing OpManager v12, world's first truly integrated network management software for faster and smarter network management.

✓ Network Health Monitoring	✓ Server Monitoring
✓ WAN RTT Monitoring	✓ Vmware & HyperV Monitoring
✓ VOIP Monitoring	✓ Process Monitoring
✓ Network Configuration Management	✓ System Health Monitoring
✓ Network Mapping	✓ Bandwidth Monitoring
✓ Network traffic Analysis	✓ Router Traffic Monitoring
✓ System Health Monitoring	✓ Eventlog Monitoring

ManageEngine
ADManager Plus

Manage Engine AD Manager Plus

ADManager Plus is a simple, easy-to-use Windows Active Directory Management and Reporting Solution that helps AD Administrators and Help Desk Technicians with their day-to-day activities.

✓ Active Directory Management	✓ Active Directory Reports
✓ AD Bulk user Creation/Modification	✓ AD Helpdesk Management
✓ AD password Management	✓ OU based delegation
✓ Mobile AD user Management	✓ MS Exchange management

Call us for a free Demo on Manage Engine

sage



Sage energises the success of business and their communities around the world through the use of smart technology and the imagination of our people.

Sage gives businesses around the world the information, insight and tools they need to succeed today.

Re-imagining business is not about playing catch up, it's about leapfrogging the competition. Too often businesses make decisions based on what's in the rear view mirror, rather than the headlights. We combine social, mobile, real-time technology to put live information at your fingertips so you can make fast, informed decisions.

Everything we do starts and finishes with building customers for life by offering them choice, support, expertise and innovation. That means championing their causes. It means offering them choice rather than forcing change upon them, and letting them know we'll be ready to go when they are.

We do business the right way – building trust with customers by being the go-to source of business advice for small and medium businesses. We also recently created the Sage Foundation and through it launched a bold new 2+2+2 model for corporate philanthropy.

We are creating a high speed, high performance culture, and becoming One Sage - a single organisation that delivers the same outstanding customer experience the world over.



sage

Authorised Partner

Sage 300 ERP

See your business in a new way...

A full-scale ERP solution that will unify every aspect of your company and streamline the way you do business



SAGE 300 ERP...one of the most successful ERP solution in Oman with over 40 implementations!

sage

Authorised Partner

Sage 300 ERP



Comprehensive Modules List

- ✓ **General Ledger**
- ✓ **Accounts Payable**
- ✓ **Accounts Receivable**
- ✓ **Multicurrency**
- ✓ **Fixed Asset Management**
- ✓ **Bank Reconciliation**
- ✓ **Check and Form Printing**
- ✓ **Document Management**
- ✓ **Budget & Allocation**
- ✓ **Multi-Company Consolidation**
- ✓ **Intercompany**
- ✓ **Inventory Control**
- ✓ **Purchase Order Management**
- ✓ **Purchase Workflow**
- ✓ **Sales Order Management**
- ✓ **Mobile Sales Solutions**
- ✓ **Project Management**
- ✓ **Service Centre Management**
- ✓ **HR and Payroll Management**
- ✓ **Employee Self Service**
- ✓ **Alert Management**
- ✓ **Business Intelligence**

Call us for a Free Demo on Sage X ERP

Amia Executive Chair



In Amia adjustable Live Lumbar™ zone flexes with every move, for consistent ergonomic support for lower back. The seat technologic foam gives an immediate comfort.

Leap Executive Chair



Leap has the flexible backrest and separate upper & lower back controls to ensure that back is always fully supported. The dynamic seat takes the pressure off the Lumbar vertebrae when reclining.

Please Executive Chair



Please task chair is the only chair with two separate backrests. It offers an unequalled level of comfort. It balances comfort, beauty and freedom of movement. Thanks to precise and intuitive adjustment controls, the chair adapts to the user.

Gesture Executive Chair



Gesture design is inspired by the way human body moves while working in today's environment to provide support in any position. Takes care of various body types and individual's sitting preferences.

Think Executive Chair



Think has embedded flexors on the back and on the seat, unique weight activated mechanism to automatically adjust the back rest tension and smooth recline support.

Reply Executive Chair



Reply (in two styles – Reply & Reply Air) is designed to provide customization, comfort, simplicity, functionality & sustainability.

Crew Executive Chair



Crew delivers all-day comfort and a high level of performance with simple, intuitive controls, right at your fingertips.

node Classroom Chair



Node is designed for class room offering comforts, flexibility, storage, quick and easy transitions between lecture based and team based modes of learning.

i2i Meeting Room Chair



i2i chair's back and seat swivel independently allowing users respond to the moment while maintaining focus. Swivel the seat and back together, swivel the back only, swivel the seat only.

Cobi Executive Chair



The Cobi Chair with one adjustment (height) and weight activated mechanism senses and supports your center of gravity to provide comfort & support in variety of postures.

Leap Lounge and Ottoman



Leap Work Lounge combines elegant form, rich materials, and Leap technology. Research has shown that changing posture is the right thing to do for good health. So go ahead, sit any way you want in the Leap Work Lounge.

Siento Executive Chair



Siento LiveBack® technology flexes with you as you move and recline in the chair, for full support. Adjustable back tension control lets you set the amount of resistance as you recline.

SW_1 Chair



Coalesse SW_1 is strong & accommodating designed for standard height tables. Works well with a desk as a side chair, or at a conference table.

SW_1 Lounge Chair



Coalesse SW_1 Lounge is a conference/lounge hybrid that creates a more intimate and comfortable environment. The mesh back breathes. The swivel base promotes conversational flow. Open arms expand the view. In meeting rooms

Coalesse Hosu Lounge



As mobile work moves around, it often needs to spread out — at home, at universities, in hotel rooms, even in creative business environments. Hosu is comfortable-physically and emotionally inviting and adoptable.

Coalesse Visalia Lounge & Sofa



Visalia top-stitched upper and lower facets can be upholstered in one material or two, for an attractive contrasting effect can be grouped to promote collaboration or loosely arranged for relaxation in offices, lobbies, or homes.

Bindu -Executive High Back Chair.



Modern executive and conference seating sensibly designed to express a softer, more residential feeling with contract durability.

Chord -Executive High Back Chair.



Clean lines and an uncluttered aesthetic make the Chord collection adaptable to almost any environment. Built-in passive ergonomic curvature of the back makes this design well-suited for long-term conferencing.

FrameOne Workstation



FrameOne is a desk designed to be beautiful, functional and beneficial to your workday. Its clean, simple lines and neat design touches make people proud to own it. Its remarkable and elegant design is reasonably priced.

FrameOne Bench



FrameOne Bench is a workstation with light and refined aesthetic. It also allows to create differentiated bench settings supporting more effectively the ways users work.

Fusion workstation & Bench



Fusion Bench is a simple, comprehensive and flexible solution. It combines work surfaces, integrated storage, desk organization and cable management

media:scape



Most collaborative work spaces today support leader-led presentations where information is controlled and shared by one person at a time. **media:scape** removes these barriers and democratizes how people access and share information by allowing all participants to contribute their ideas – equally, quickly and seamlessly. **media:scape** is an entire range of an integrated furniture and media solutions. It is designed to help people connect and collaborate, quickly and seamlessly.

Answer Workstation



Answer solutions offer a range of applications, aesthetics, technology supports and ownership adaptability to meet the challenges of today and tomorrow. From open bench applications to more individual private space, the inherent flexibility of **Answer** provides ultimate balance of privacy and collaboration. **Answer's** wide range of aesthetic options ensure integration into any environment. Answer can help organizations balance collaboration and privacy, support mobility and optimize real estate.

c:scape Workstation



c:scape is a workplace system composed of 4 elements: desk, low storage, mid storage and screens. **c:scape's** clean and light design is harmonious and innovative. It helps people work together and search information easily and efficiently.

Elective Elements 6 Executive Desking



Elective Elements 6 is a freestanding office system designed to address the changing work-space requirements in today's private and open-plan environments. **Elective Elements 6** supports the needs of the individual, without sacrificing functionality and aesthetics.

Impact Executive Desking



Impact brings a high-design focus to any work environment without compromising high-tech convenience. Wire management is thoughtfully integrated into the design for discreet, easy access to technology solutions. Storage components in a wide variety of sizes and surface material.

Norfolk II Executive Desking



Norfolk II traditional wood furniture conveys an unmistakable image of refined elegance. Its rich appearance reflects a classic style, and its presence lends sophistication to any office.

Universal Storage



Universal Storage is a complete storage family combined with functional and ergonomic internal fittings, it helps people to be more productive.

High Density Storage



High Density Storage extends the workspace by offering storage near the workstation. It can be used as a space divider, structuring personal and team workspaces.

Kalidro Conference Table



Kalidro Conference modularity allows creation of individual configurations with the top shapes available up to width of 2400mm.

Share It Modular Storage System.



Share It is a modular storage system. It offers personal storage, team storage, meeting point solutions and lockers. Share It can be also used as space dividers, structuring workspaces.

Flexbox



This modular storage system offers high flexibility for all environments. It can be used as individual or team storage. **Flexbox** can be installed in any configuration. Its patented connector enables fast connection with a simple coin to lock and unlock it.

4.8 Meeting Table



4.8 four point eight has innovative "plug 'n play" connectivity integrated into the center of the table. It enables the work surface to be clutter-free. The innovative integration of technology facilitates the connections between people and smooths the flow of information.

REY



The back plate is injected with in the form of a mesh structure enhances flexibility and permeability.

ELLIPSE



Ellipse developed ergonomically improves worker health and productivity.

OH 8100



Achieving a high quality work environment through top of the line material poised design.

S9 EXECUTIVE CHAIR



The utmost in class and luxury, with an ergonomic design that guarantees outstanding comfort, the luxury office chair Neoce S9 shows the true beauty of absolute simplicity.

EZIX



Highly elastic mesh, it helps speed up the metabolism by keeping the airflow uninterrupted where it comes in contact with the body.

REINA



A highly permeable and flexible mesh cover with smooth curve lines on the back provides natural comfort.

PRIMO



The practical chair with style produces the perfect environment for the work-place.

WILL



Simple but fashionable 3-dimensional back & seat delivering comfort along with straight and curve lined armrests is our compliment to spice up your senses.

LOBBY CHAIR



A lobby chair used in the lobbies of large building or in the waiting rooms of hospitals, banks etc.

RS7 SOFA



An Office Sofa that creates a classy atmosphere with its simple, streamlined design sensibility.

AUDITORIUM SEATING



Livart - Comfortable and versatile mass seating for auditorium.

OPEN OFFICE WORKSTATION



QUVE

Space-efficient installation is possible as well as a diverse choice of fabric colors to best suit the needs of your working environment.



NF7

The NF7 700 GROUP, creating new standards for office furniture of the future. The complex and constrained layouts of traditional workstations are reworked and reborn in the futuristic, simple designs of the NF7 700 group, offering greater comfort and convenience at every level.

HIGH PROFILE EXECUTIVE DESKING



TOP CLASS

The Epitome of class, this Executive Office is meticulously designed to the smallest detail, exuding the highest quality and the finest aesthetic sensibility.



EX7

The Elegant and luxurious design is equipped with diverse functions that match the executive level furniture and extends the concept of the personal workplace to the entire area surrounding the desk.



LACUS

The lacus Series finished with a unique luxurious noce finish with aluminum frames in a simple refined design.



EX3

The teak finish matched with dark grey creates a soft atmosphere while the aluminum frames and handles add refinement.

CONFERRING SOLUTIONS



CT2000

The tables for various conference requirements to suit space.



AT5500

A Modularised adjustable table unit designed for use at a conference room or lecture room.

EDUCATIONAL FURNITURES



SEMINAR



FRENDY



SE5

Ergonomic furniture designed to maintain comfort for long periods of time and available in diverse Classroom desks and chairs that highlight Neoce's unique design ideas durable structure, functional modesty panel and soft urethane corners.



CLECS

Chair-desks ergonomically designed with students' every need in CLECS, a movable and foldable multi-purpose desk and chair, guarantees the rapid rearrangement of space and maximizes its use.



KIDS LIBRARY

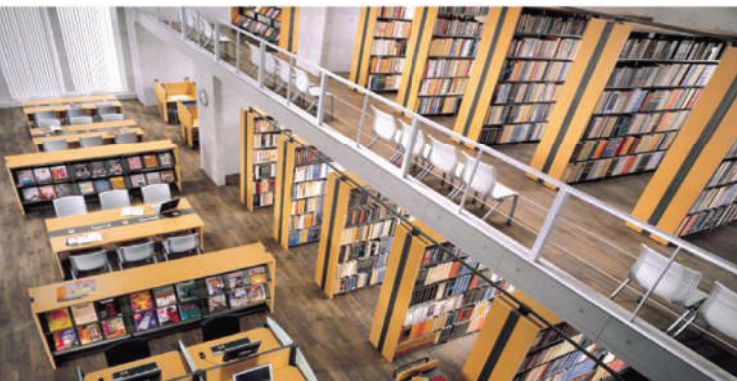
The systematic modular design of this children's furniture allows for easy adaptation to any space and layout. ideal for use in children's libraries or in kindergartens.



LAB FURNITURE

All digital video educational facilities in the lab are monitored and controlled at the teacher's lab station for the maintenance of a safe and pleasant educational environment.

LIBRARY FURNITURE



Library furniture range optimizes the use of space in the library making it easier to read, research materials, and manage books.



The executive office & small meeting table are meticulously designed to the smallest details for modern technological needs & aesthetic sensibility. Multicultural and multiple working modes can find their respective expression and interact themselves with the modern office Furniture and office environment.



Bench-shaped design offers optimal structure and space utilization. This line is next generation office furniture completely adaptable to any space.



Meticulously designed workstation with aesthetic sensibility create a comfortable environment for its workers. It must become a place where individuals can maximize their abilities.



A furniture module system that allows you to break from the conventional office environment and to optimize your work space in any environment. The two toned simple and minimalistic design produces a fresh atmosphere.



The furniture is made of luxurious natural Veneer. This is perfect for a modern & comfortable managerial space/office.



A distinct city sensibility with a bright, light design and complimentary tones of different finishes. The combination **desk and cabinet** ensures ample storage space.



An **office sofa** that creates a classy atmosphere with its simple, streamlined design sensibility.



Counters constructed so that everyone visiting a building can use them. Good design achieves a functional result and be pleasing to look at in an architectural context.



It sets a standard in high end **executive furniture** by offering aesthetics, functionality, convenience, and diversity. The finest natural wood veneer enhances the prestige of the office.



The **executive chairs** for the businessmen for the honored position and the particularly advanced business space. The chairs emanates a relaxing feeling from its convenient functions, durable structure, and graceful design. An office chair with excellent practical functions



VISITOR series products made with voluminous spaces give a slim and simple image. Streamlined user-friendly components and solid steel materials will turn your rooms into spaces that look simple, but are ergonomically designed.



Frezza is a leading Italian office furniture company. The CX executive range is perfect for a prestigious managerial space. Rigorous architectonic elements, visual contrasts, orthogonal and parallel compositions delineate an executive environment. Elegant materials and tones for the taste of the contemporary management



DR is one of the most representative pieces of Frezza collection, which this year will be proposed in its new version with finishes fronts in light blue lacquered and wood dark walnut. DR with its elegant lines allows the collection with a big versatility: in fact DR can fit in perfectly also in domestic environments.



Forma range desktop, with tailoring intersections, create wide workstations & Sophisticated meeting area. This is a contemporary, sophisticated & creative design.



Velvet embodies the needs of a contemporary office with great attention for aesthetic and ecological topics. Elegant finishes are added to its updated design: white, black and dove etched glass back-painted coated lower side, Elm and American walnut and melamine finishes in Dove and Tobacco oak are available.



Ono stands out in the office scenario for its sense of balance characterized by clean lines, for the combination of refined materials creating both flat surfaces and 3-dimensional shapes, and for functional elements such as sliding tops and secretary service units



Mux is rational choice for the manager's office. It provides solutions that offer style combined with the greatest functionality.



PAPER PRODUCTS



FILING PRODUCTS





PILOT WRITING INSTRUMENTS - JAPAN





DURABLE - GERMANY



ELBA - GERMANY



REXEL - U.K





PREMIER

ALBA

ELBA



REXEL

CASIO

3M

ACE OFFICE SERIES



CASIO.

SINARLINE

PREMIER

ZAP

ELBA

ACCO

REXEL

CASIO CALCULATORS - JAPAN



SINARLINE - INDONESIA



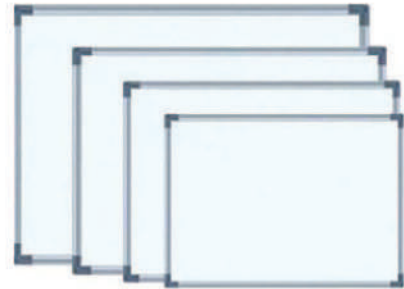


SCHOOL SUPPLIES





OFFICE BOARDS



DIARIES & CALENDARS

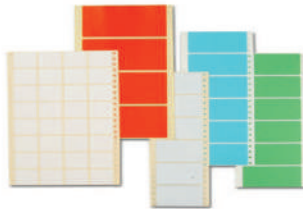




DESK ACCESSORIES



LABELS



TONER & CARTRIDGE



ENVELOPES



3M PRODUCTS



Digital Printing & Copying Services

B/W & Colour
Copying / Printing



Printing / Scanning / Plotting
Engineering Drawings



Laminations



Document Scanning



Document Binding



HEAD OFFICE / SHOWROOM

P.O. Box 1437, Ruwi, Postal Code 112,
Tel. No. 24829400 (10 Lines), Fax No.: 24829482
Stationery Division: 24829430 / 24829431
Furniture Division: 24829440 / 24829441
Office Equipment: 24829461 / 24829462
Service: 24829450